

OHIO  
COMMUNITY  PRACTICE  
FOR SUPPORTING FAMILIES

August 16, 2018  
10:00 am - 3:00 pm  
Delaware County Board of DD - East Wing  
7991 Columbus Pike, Lewis Center OH 43035  
Entrance at Rear of Building

## Ohio Community of Practice (CoP) for Supporting Families Meeting

- 10:00 Introduction Session
  - Charting the LifeCourse Introduction and Refresher
  
- 11:00 Main Session Kick Off
  - Welcome
  - Networking and Sharing
  
- 11:30 Charting the LifeCourse Ambassadors
  - Local Building Blocks for Supporting Families
  
- 12:00 Lunch (Provided)
  
- 12:30 Project Lead Partners Work Plan for 2018-2019
  
- 1:00 Generate Local Actions for Supporting Families
  - Table Conversations
  - Whole Group Conversation
  
- 2:15 Actions to Help Families Connect to Families
  
- 2:45 Reflections and Closing Remarks
  
- 3:00 Close

### Additional Information

- Project Lead Partners help to reinforce the work of Ohio's CoP.
  - Ohio Department of Developmental Disabilities
  - Ohio Developmental Disabilities Council
  - The Ohio State University Nisonger Center
  - University of Cincinnati Center for Excellence in Developmental Disabilities
- [FRNOhio.org](http://FRNOhio.org) has more information about Charting the LifeCourse and other resources for families.
- Next Ohio Community of Practice for Supporting Families meeting:
  - November 8, 2018 - Delaware County Board of DD 7991 Columbus Pike, Lewis Center OH 43035

OHIO  
COMMUNITY  PRACTICE  
FOR SUPPORTING FAMILIES

---

AUGUST 16, 2018

# Today's Agenda

---

- 1) Project Lead Partner Welcome
- 2) Overview of Community of Practice
- 3) Networking and Sharing
- 4) Local Building Blocks
- 5) Lunch
- 6) Project Lead Partners Work Plan
- 7) Generate Local Actions
- 8) Reflections and Closing

# Welcome

---

## **Community of Practice (CoP)**

Communities of practice are groups of people who share a concern or a passion for something they do and learn how to do it better as they interact regularly

## **Ohio's CoP Project Lead Partners**

- Ohio Department of Developmental Disabilities
- Ohio Developmental Disabilities Council
- The Ohio State University Nisonger Center
- University of Cincinnati Center for Excellence in Developmental Disabilities



# SUPPORTING FAMILIES

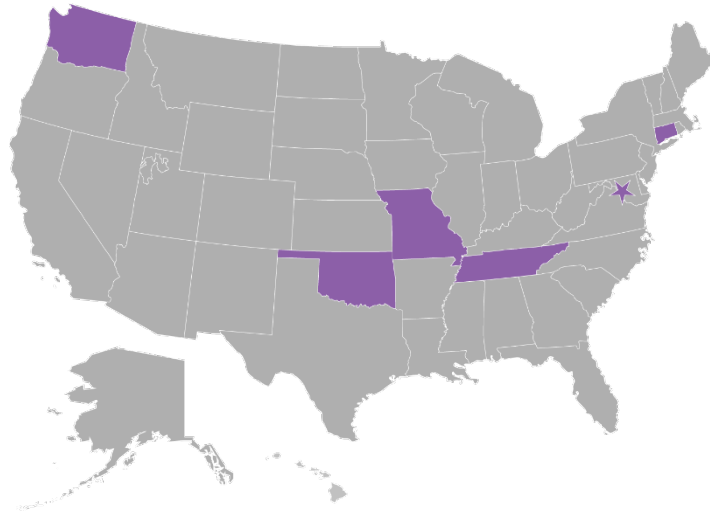
of individuals with intellectual & developmental disabilities

THE NATIONAL COMMUNITY OF PRACTICE • A COLLABORATION BETWEEN NASDDDS AND UMKC IHD, UCEDD

The National Community of Practice for Supporting Families of Individuals of I/DD originally began in 2012

## Original States

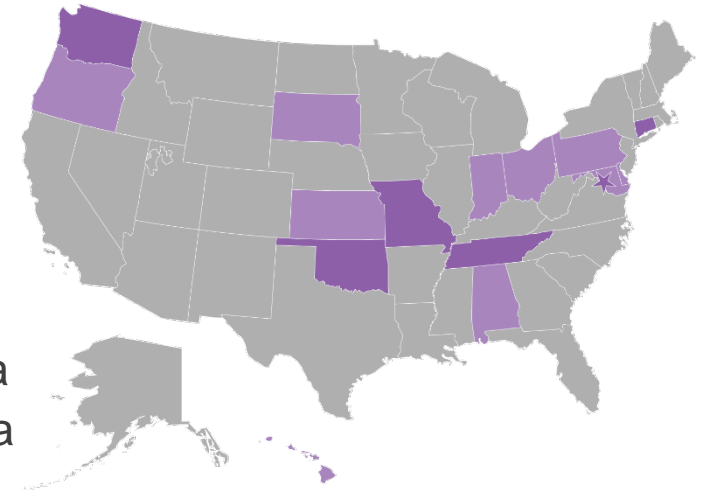
- Connecticut
- District of Columbia (DC)
- Oklahoma
- Tennessee
- Washington
- Missouri



In July 2016, the Community of Practice expanded and new states joined the CoP in addition to the original states

## Expansion States

- Alabama
- Delaware
- Hawaii
- Indiana
- Kansas
- Maryland
- **Ohio**
- Oregon
- Pennsylvania
- South Dakota





# SUPPORTING FAMILIES

of individuals with intellectual & developmental disabilities

THE NATIONAL COMMUNITY OF PRACTICE • A COLLABORATION BETWEEN NASDDDS AND UMKC IHD, UCEDD

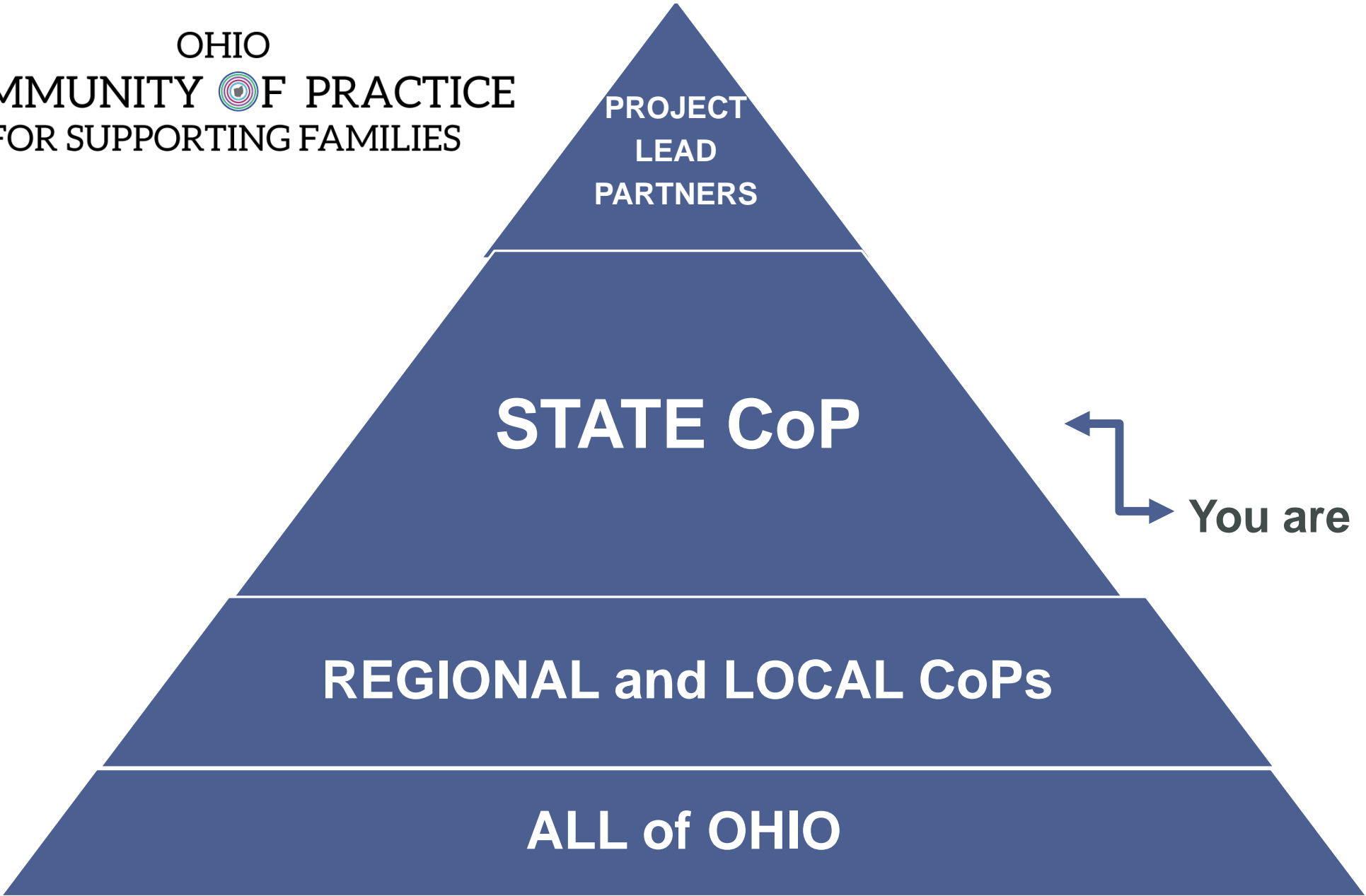
## **National Community of Practice Goal**

To build capacity through a community of practice across and within States to create policies, practices and systems to better assist and support families that include a member with intellectual and developmental disability across the lifespan

## **Supporting Families Goal**

Supporting families, with all of their complexity, strengths and unique abilities, so they can best support, nurture, love and facilitate opportunities for the achievement of self-determination, interdependence, productivity, integration, and inclusion in all facets of community life for their family members

OHIO  
COMMUNITY OF PRACTICE  
FOR SUPPORTING FAMILIES



You are here!



# Where Ohio is Now: Phase Two and Three

<b>Phase I</b> <b>2016-17</b>	<b>Exploration</b> <ol style="list-style-type: none"><li>1. Learning about and educating others on the LifeCourse framework</li><li>2. Gathering Input from stakeholders on vision, mapping strategies, needs and resources</li></ol>
<b>Phase II</b> <b>2018-19</b>	<b>Installation</b> <p>Honing in on innovation areas and developing specific goals, outcomes and activities</p>
<b>Phase III</b> <b>2018-19</b>	<b>Initial Implementation</b> <p>Work plan and local actions put into effect</p>
<b>Phase IV</b> <b>Ongoing</b>	<b>Full Implementation</b>



# Networking and Sharing

---

**When it comes to Supporting Families,  
the thing I'm passionate about is...**

- On the Post-It Note
- Record a Word or Phrase
- Use Marker
- Big Print



**I AM  
PASSIONATE  
ABOUT...**

# Networking and Sharing

---

## Find at least two others with a similar passion

- Hello... my name is...
- I'm from...
- Why I am passionate about...
- What I've been up to lately re: the thing I'm passionate about...



**I AM  
PASSIONATE  
ABOUT...**

# Networking and Sharing

---

**What did you hear  
that inspires or  
encourages you?**



**I AM  
PASSIONATE  
ABOUT...**

# Local Building Blocks

---

Ohio's LifeCourse Ambassadors		
Barb Sapharas	Celia Schloemer	Melane Barlow
<a href="mailto:bsapharas@aol.com">bsapharas@aol.com</a>	<a href="mailto:celia.schloemer@cchmc.org">celia.schloemer@cchmc.org</a>	<a href="mailto:vmbarlow25@icloud.com">vmbarlow25@icloud.com</a>

[Video](#): LifeCourse Framework in Miami County

OHIO  
COMMUNITY  PRACTICE  
FOR SUPPORTING FAMILIES

# Project Lead Partners Work Plan

---

**Purpose:** To strengthen a cluster of approaches that build family connections to other families across all life stages and phase.

- Developed from feedback at Ohio's May CoP meeting
- Lead partners promote work plan at systems level
- State CoP help to generate local action

## Project Lead Partners

- Ohio Department of Developmental Disabilities
- Ohio Developmental Disabilities Council
- The Ohio State University Nisonger Center
- University of Cincinnati Center for Excellence in Developmental Disabilities

## Work Plan Principles

- ✓ Strengthen an array of approaches so that families can choose what works best for them
- ✓ Include all families
- ✓ Strengthen approaches that connect families with a member with a disability to other families with a member with a disability
- ✓ Strengthen approaches that connect families with a member with disability to families in their community who do not have a member with a disability
- ✓ Bring creativity and fresh thinking to the purpose and ways that families come together
- ✓ Strengthen opportunities for family leadership both within the disability community as well as in the broader community and local neighborhoods

# OHIO COMMUNITY PRACTICE FOR SUPPORTING FAMILIES

Encourage  
Family  
Connections  
with other  
Families in  
Typical  
Community  
Places

Build  
Opportunities  
for Web-  
Based Family  
Connections

Provide  
Support for  
Family  
Organizations

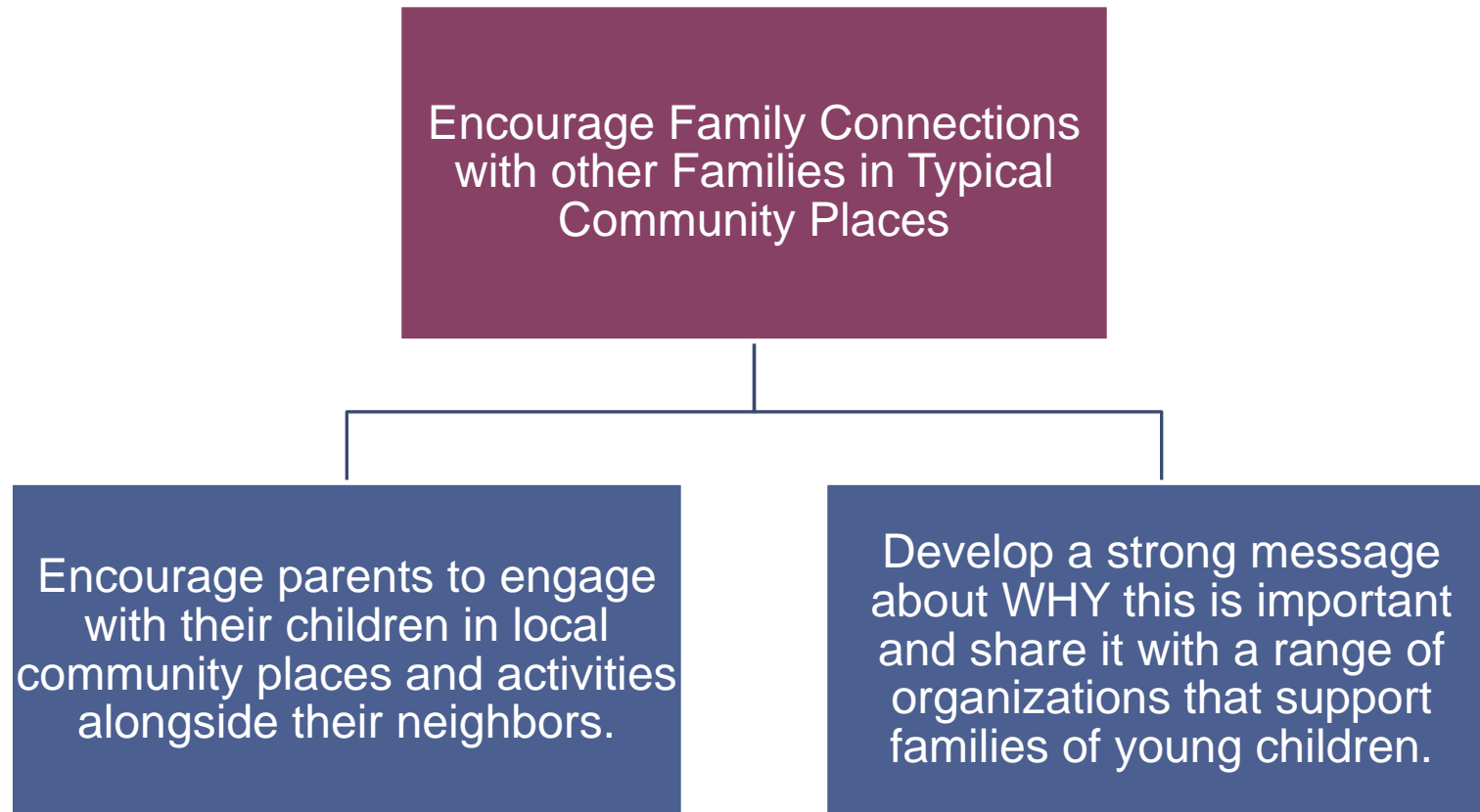
Create  
Opportunities  
for Family  
Leadership in  
Building  
Inclusive  
Communities

Offer CtLC to  
Family  
Members

Strengthen  
Families  
Supporting  
Families

# Goals and Objectives

---





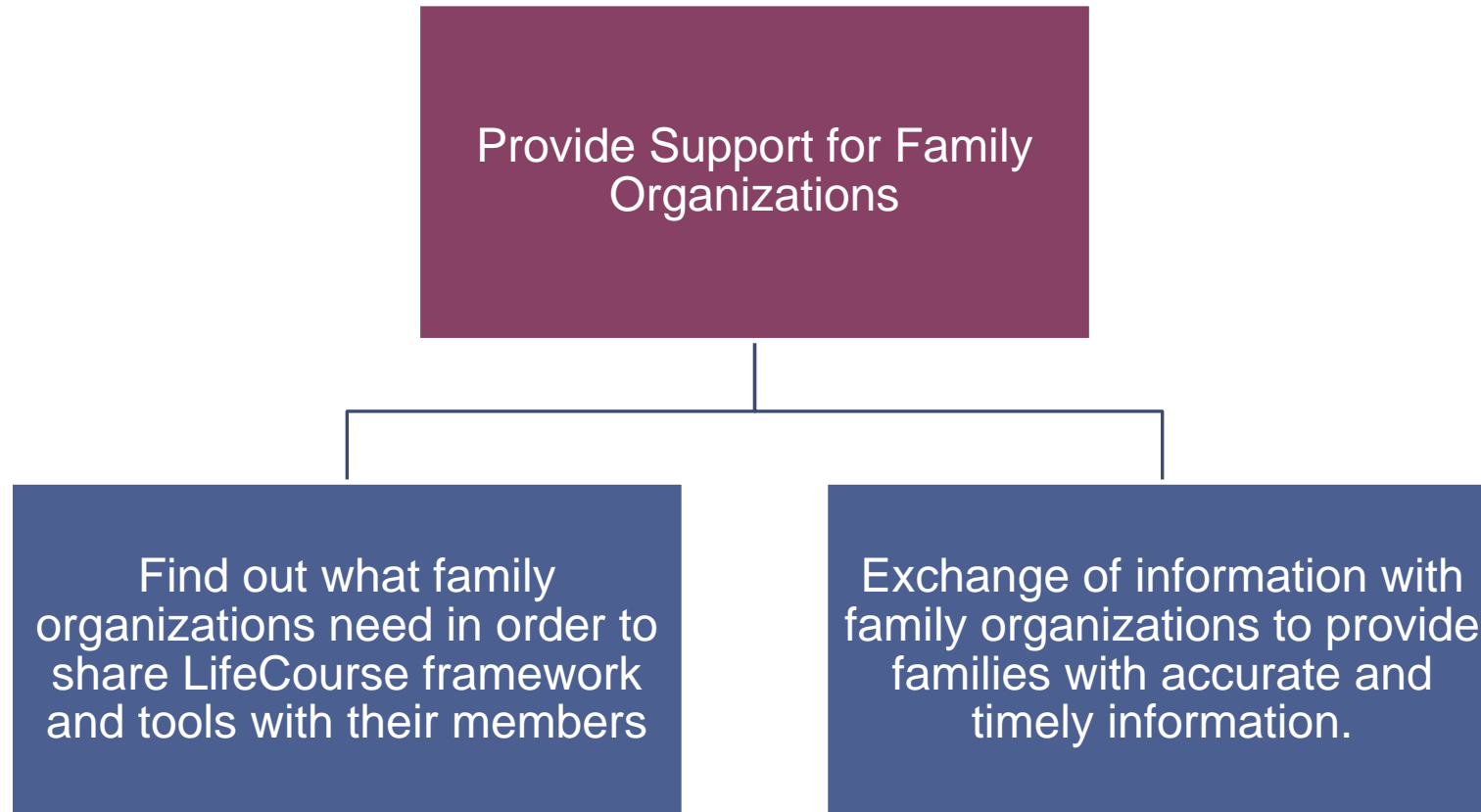
# Goals and Objectives

---



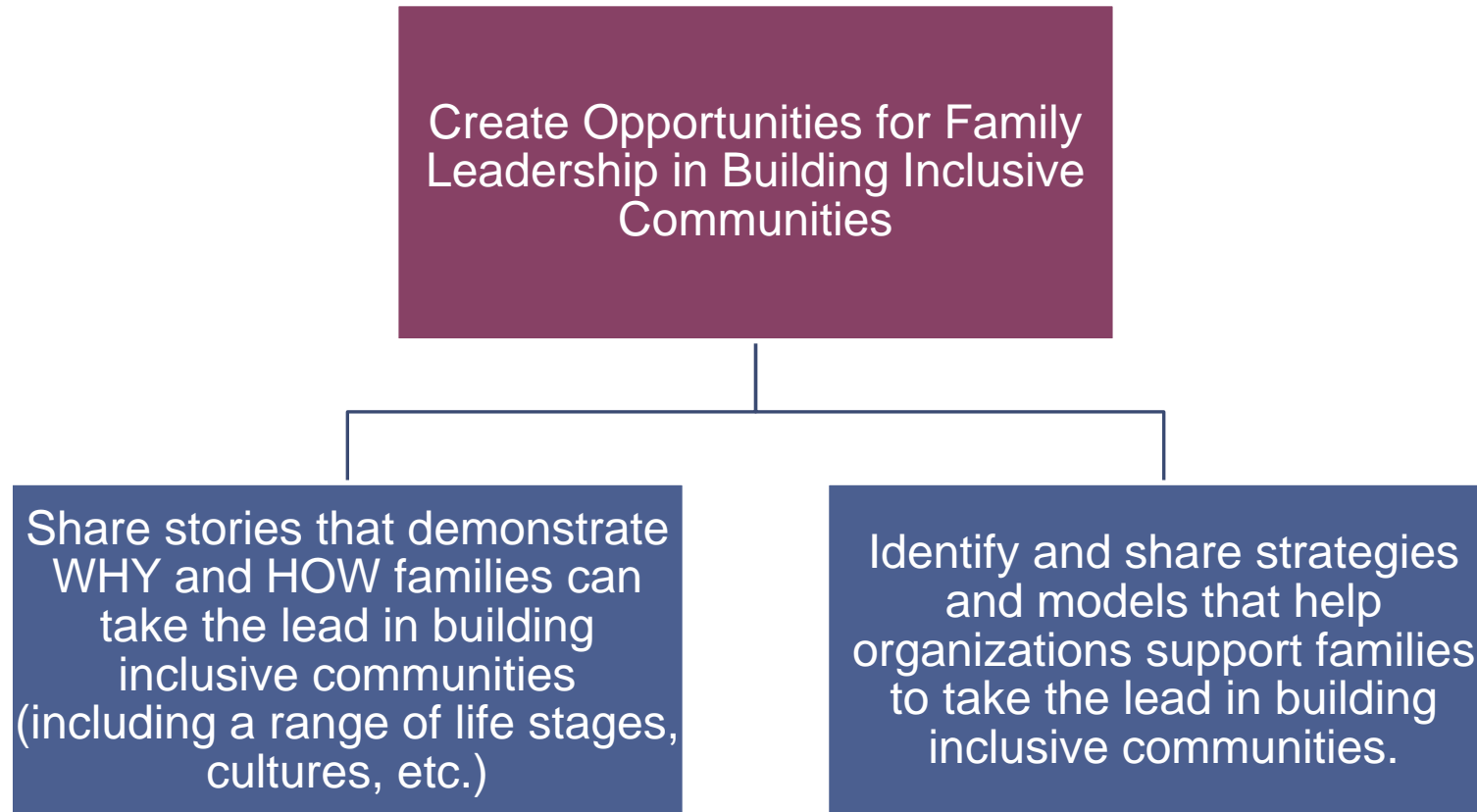
# Goals and Objectives

---



# Goals and Objectives

---



# Goals and Objectives

---

Offer CtLC to Family Members

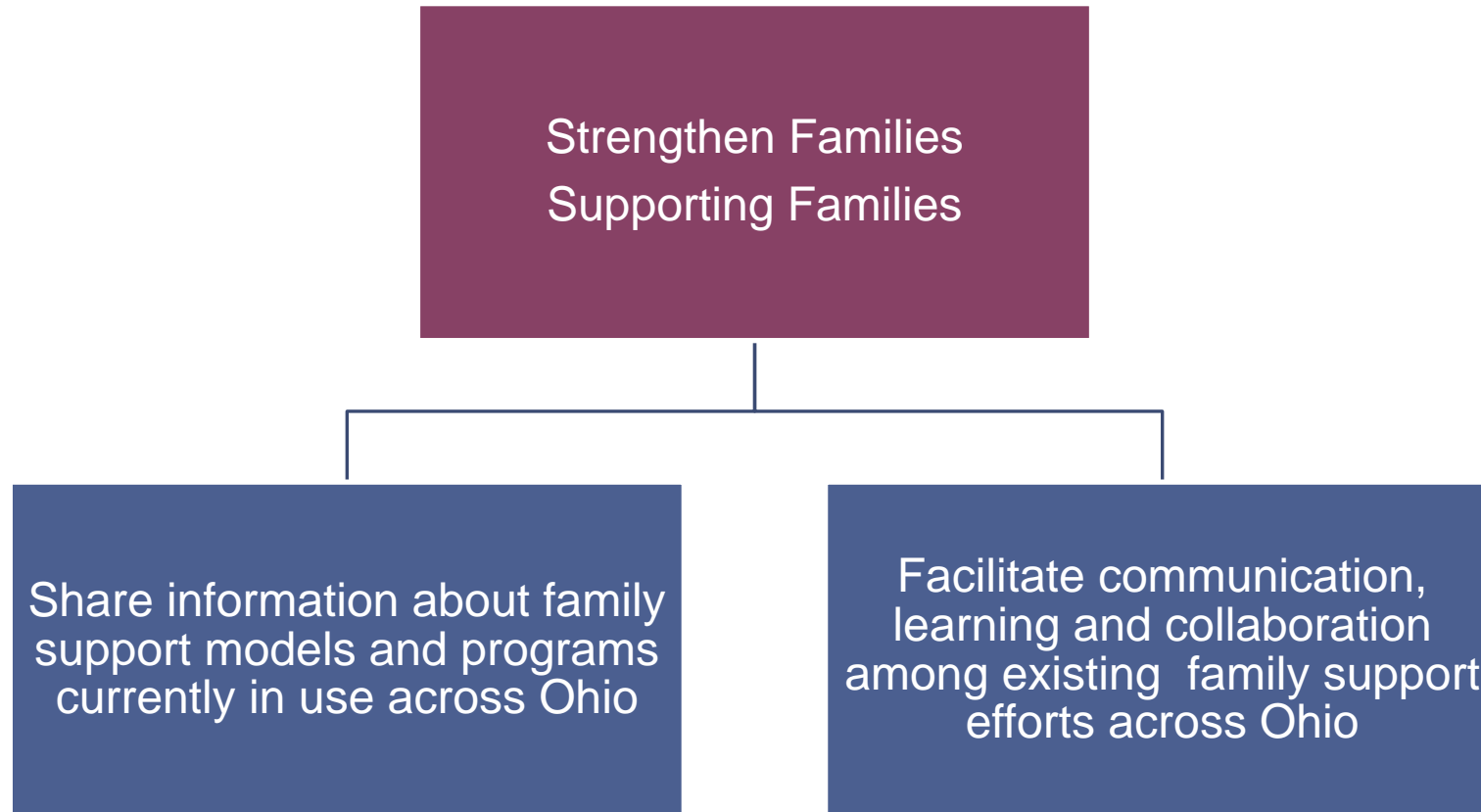
Offer LifeCourse training at regional and statewide conferences and events

Utilize family organizations as a conduit to disseminate LifeCourse

Create opportunities for more families to use the LifeCourse framework

# Goals and Objectives

---



# Family Support Model Example: Parent to Parent

---

OHIO  
COMMUNITY  PRACTICE  
FOR SUPPORTING FAMILIES

# Generate Local Actions for Supporting Families

---

## Four Tables

1. Encourage Family Connections with other Families in Typical Community Places
2. Build Opportunities for Web-Based Family Connections
3. Provide Support for Family Organizations
4. Bonus: Strengthen Family Connections

## Two Questions at Each Table

1. How do we amplify this at the local level?
2. What are you willing to do in this area to help families connect to families?

**Three Rounds**  
**Fifteen Minutes per Round**

# OHIO COMMUNITY OF PRACTICE FOR SUPPORTING FAMILIES

Encourage  
Family  
Connections  
with other  
Families in  
Typical  
Community  
Places

Build  
Opportunities  
for Web-Based  
Family  
Connections

Provide Support  
for Family  
Organizations

Strengthen  
Family  
Connections



# Actions to Help Families Connect to Families

---

## Ohio Community of Practice

- This is what I can do...
  - Sticky note on trajectory
  - Index card to take home
- Report Back
  - Send a selfie video or write a testimonial
    - Send to: [Steven.Beha@DODD.Ohio.gov](mailto:Steven.Beha@DODD.Ohio.gov)
  - Updates throughout the process
  - Share at next meeting – November 8<sup>th</sup>

## Ambassadors and Project Lead Partners

- I heard I can help with...
- Report back on work plan progress at next meeting

# Reflections and Closing Remarks

---

OHIO  
COMMUNITY  PRACTICE  
FOR SUPPORTING FAMILIES

# OHIO COMMUNITY PRACTICE FOR SUPPORTING FAMILIES

---

**Steve Beha**

Family Outreach and Education Coordinator

Division of Policy and Strategic Direction

Ohio Department Of Developmental Disabilities

Phone: 614-466-4085    Email: [Steven.Beha@dodd.ohio.gov](mailto:Steven.Beha@dodd.ohio.gov)