

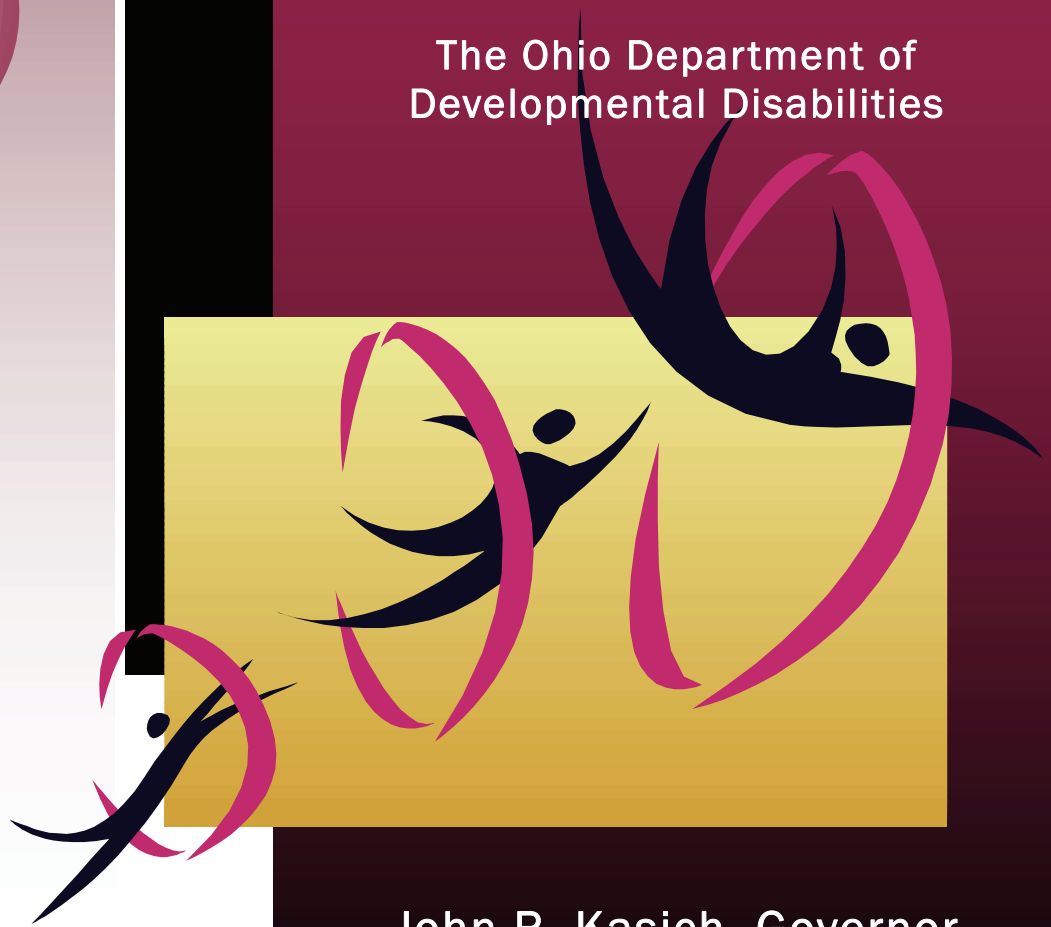


*Calendar Year 2013
Annual Report*

Ohio's Developmental Centers

John L. Martin, Director
Ginnie Whisman, Deputy Director
Brent Baer, Assistant Deputy Director

The Ohio Department of
Developmental Disabilities



John R. Kasich, Governor
The State of Ohio



Inside

The Developmental Centers

Mission Statement (page 1)

Map Overview (page 2)

Overview of the Fiscal Year (page 3)

Overview of Developmental Centers

Cambridge (page 4)

Columbus (page 5)

Gallipolis (page 6)

Montgomery (page 7)

Mount Vernon (page 8)

Northwest Ohio (page 9)

Southwest Ohio (page 10)

Tiffin (page 11)

Warrensville (page 12)

Youngstown (page 13)

Developmental Center Statistical Summary Charts



Mission Statement For Ohio's Developmental Centers

To support individuals who require comprehensive program, medical and residential services with a continuum of choice-driven opportunities; ensuring that competent personnel assist in the development of skills and relationships; and protecting personal integrity so that each person may experience a life of increasing capabilities and independence.

Ohio Department of Developmental Disabilities

Ohio's Developmental Centers



1) Cambridge Developmental Center
66737 Toland Drive
Cambridge, OH 43725-8987
Cathleen Ballinger, Superintendent

2) Columbus Developmental Center
1601 W Broad Street
Columbus, OH 43222-1087
D. Michael Snow, Superintendent

3) Gallipolis Developmental Center
2500 Ohio Avenue
Gallipolis, OH 45631-1699
Mike Fitch, Superintendent

4) Montgomery Developmental Center
7650 Timbercrest Drive
Huber Heights, OH 45424
Nancy Banks, Superintendent

5) Mount Vernon Developmental Center
1250 Vernonview Drive
Mount Vernon, OH 43050
Ernie Fischer, Superintendent

6) Northwest Ohio Developmental Center
1101 South Detroit Avenue
Toledo, OH 43614
Richard Suehrstedt, Superintendent

7) Southwest Ohio Developmental Center
4399 East Bauman Lane
Batavia, OH 45103
C. Scott McVey, Superintendent

8) Tiffin Developmental Center
600 North River Road
Tiffin, OH 44883
Sara Lawson, Superintendent

9) Warrensville Developmental Center
4325 Green Road
Highland Hills, OH 44128
Wendy DiGregorio, Superintendent

10) Youngstown Developmental Center
4891 East County Line Road
Mineral Ridge, OH 44440
Cynthia Renner, Superintendent

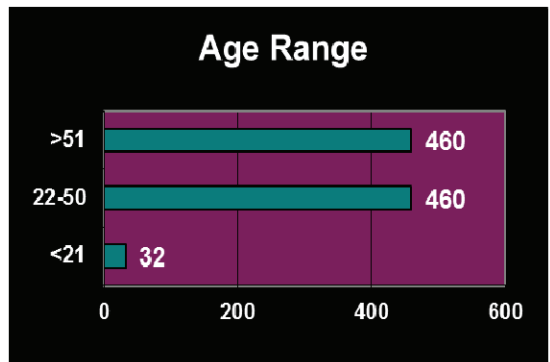
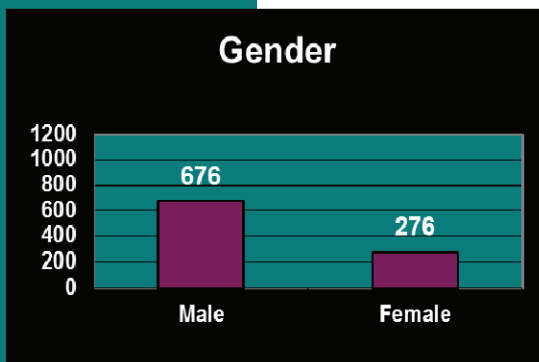
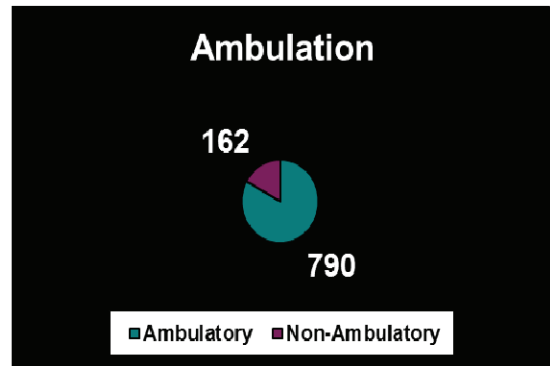
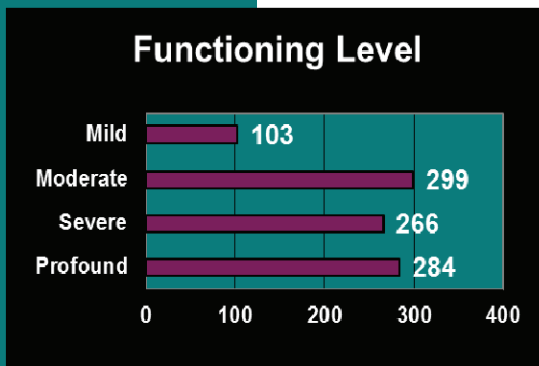
Developmental Center Overview

Ohio's 10 Developmental Centers (DCs) located throughout the state serve approximately 950 citizens with intellectual disabilities. Each of these Centers is certified as an Intermediate Care Facility for Individuals with Intellectual Disabilities (ICF/IID) by the federal Medicaid program, signifying its compliance with mandated standards governing the care, training and environment it provides to its residents. The Centers are also licensed by the Ohio Department of Developmental Disabilities.

DC staff support individuals who require comprehensive program, medical, behavioral and residential services, and assure that an array of choices ensure that each resident may experience a life of increasing capabilities and independence.

DCs provide all Ohio counties with regional resources to assist individuals if they wish to remain in their community homes, and may provide short term admissions to assist in the stabilization of behavioral and medical events to help individuals return to their homes in the community as soon as possible.

Centers are a part of an extensive outreach network with the 88 county boards of developmental disabilities. Centers provide such services as case consultation, staff training and short term admissions.



Statistics as of 12/31/13

Cambridge Developmental Center

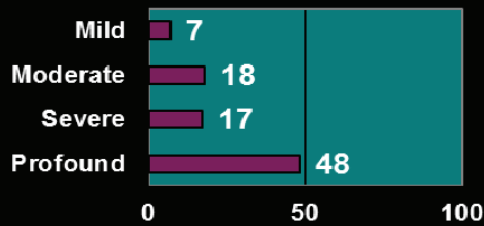


The Cambridge Developmental Center (CaDC) is composed of five homes where approximately 90 people with intellectual disabilities reside and experience quality opportunities. The center is an Intermediate Care Facility where people with intellectual disabilities are served with the purpose to provide health and habilitative services.

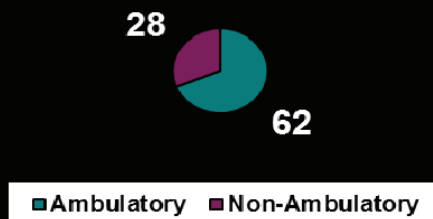
A variety of services are offered to ensure compliance with such requirements. A wide range of needs require the center to offer extensive supports in daily living, health care, dietary, psychological development and overall social skill development. To facilitate independence and self-management, each person who lives at the center is supported by well trained staff. These include, program specialists, residential managers, nursing and medical personnel, psychologist, psychiatrist, therapeutic program workers, and other ancillary professionals to promote an environment that enables and fosters quality experiences for which to learn and succeed. Every person is assessed by these professionals and assistance is provided based on their individual strengths and needs which occur throughout their normal daily routine.

The necessary supports and training are provided to ensure each person is as independent as they can be and thrive in their environment. The center has had great success in providing these services due to the competent and dedicated staff employed at the facility. Approximately 192 staff assist in ensuring quality services and, with that, wonderful events and experiences have occurred over the past year.

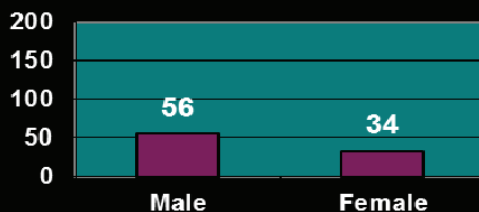
Functioning Level



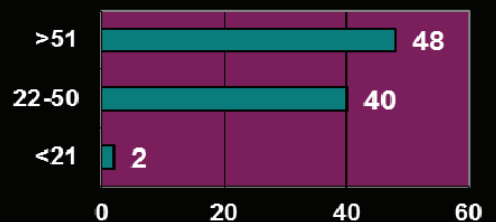
Ambulation



Gender



Age Range



Statistics as of 12/31/13

Cathleen Ballinger, Superintendent

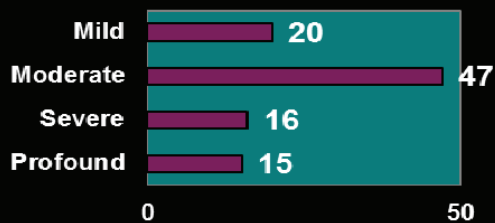
Columbus Developmental Center

The Columbus Developmental Center (CDC) was established August 3, 1857, as the Ohio Asylum for the Education of Idiotic and Imbecilic Youth. The Center was moved to its current location in 1867 due to the increasing demand for admission and to be located on farming property away from the expanding city. Today, CDC is the state's oldest continuously operated facility for the disabled. CDC is situated on a 92-acre campus. Through Ohio's commitment to capital planning and improvement, today's residences have been modernized to better meet the needs of those living at the facility. Each house is home for 8 to 32 individuals with a total campus census of approximately 95 residents.

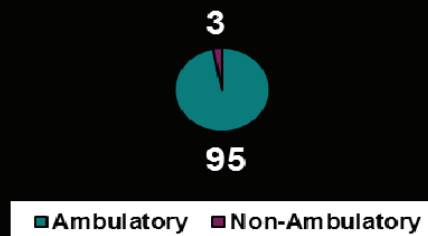
CDC serves many individuals with significant challenges. The intent of the facility staff and programs are to aid each person being served to return to their community. During day time hours, the individuals are served at an on-grounds activity program, nonprofit board employment and community sites operated and funded by the Franklin County Board of DD.

The active treatment components of the center are integral to the personal growth and development of each of the individuals residing at the center. Programs include physical development, social growth, behavioral stability, and personal daily living skills training. These programs and therapies combine into a systematic effort by all staff members to increase the skills that individuals need to function as independently as possible. It is through the caring efforts of staff that the individuals living at the center participate fully in healthy, happy lives.

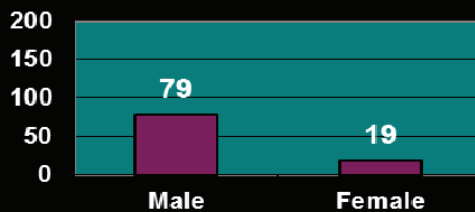
Functioning Level



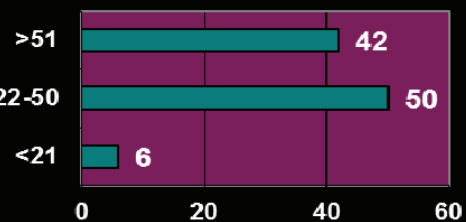
Ambulation



Gender



Age Range



Statistics as of 12/31/13

D. Michael Snow, Superintendent

Gallipolis Developmental Center

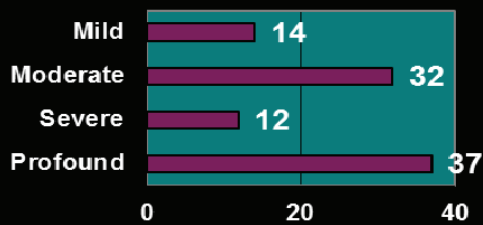


The Gallipolis Developmental Center (GDC) sits on an Ohio River plateau within the historic city of Gallipolis. It has a beautiful tree-lined campus that was the location of a union civil war hospital. In 1890, it became the site of the first and largest facility in the nation providing services to persons with epilepsy. As the Ohio Hospital for Epileptics, it continued to grow and prosper greatly through the following four decades. In 1950, the name was changed to the "Gallipolis State Institute". In 1961, it served as the home for 2,358 Ohio citizens with illnesses ranging from epilepsy and retardation to mental health.

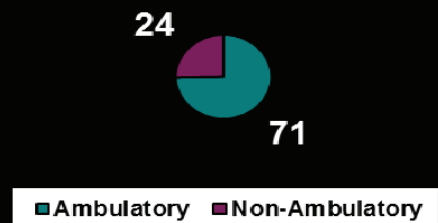
On April 18, 1979, the first four new residential buildings were dedicated. The four new 18-bed living areas were representative of a new philosophy for the care and training of the mentally retarded. When the capital plan for the balance of the new buildings was complete, the center's physical plant would be eligible for certification under the Federal Medicaid Program. On September 7, 1979, it became known as GDC. Since 1977, millions of dollars in capital improvements have transformed GDC into the modern facility it is today.

GDC is currently the home for approximately 95 individuals. The center continues to provide comprehensive services in a wide variety of professional services. The majority of the individuals spend their daytime hours participating in off-campus work/habilitative activities provided through an agreement with Riverview Productions. In addition, a 35,000 square foot activity center is an on-grounds location for habilitation, recreation, work readiness, and therapeutic training for remaining individuals.

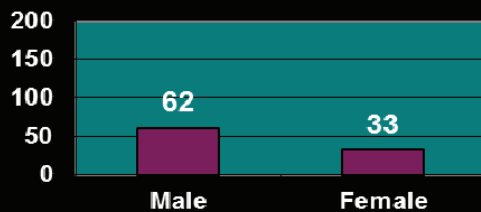
Functioning Level



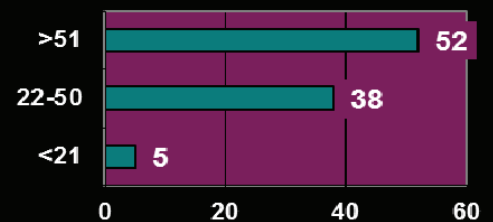
Ambulation



Gender



Age Range



Statistics as of 12/31/13

Mike Fitch, Superintendent

Montgomery Developmental Center

Montgomery Developmental Center (MDC) is a residential training Center and home to approximately 92 adults with developmental disabilities. The 18-acre campus is located in Montgomery County in the city of Huber Heights. MDC consists of six brick, ranch-style residential homes, a service building, a maintenance shop, the administration building, and one home which houses staff from Advocacy & Protective Services, Inc. (APSI). Along with a medical clinic and administrative offices, the administration building houses an indoor pool; a bird aviary; a conference center; an activity room; our family visitation room, "Bradley's Room," and the newly renovated "Coffee Spot."

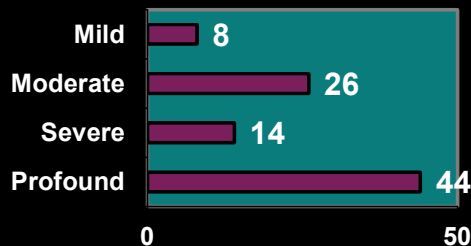
MDC offers a lot of indoor activities throughout the year, including games, sports, arts and crafts, dances, parties, special activities, church services, swimming, socialization in the *Coffee Spot*, and special parties on all of the major holidays.

Community involvement continues to be an important aspect of training and development for MDC residents. The Huber Heights community continues to show their support as our residents shop in local department stores and grocery stores, and access other aspects of the Huber Heights community such as local parks, bowling, hair salons, restaurants, and movies.

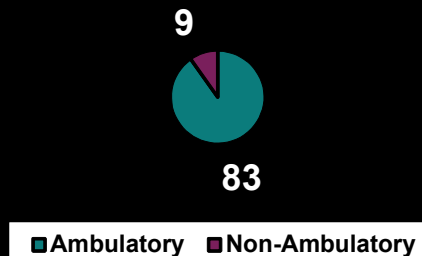
MDC is extremely fortunate to have many community members who volunteer their time and resources through special projects, donations, and personal contact with the individuals who live at the Center. For the past two years, folks from GE Aviation have been volunteering at MDC, helping out with



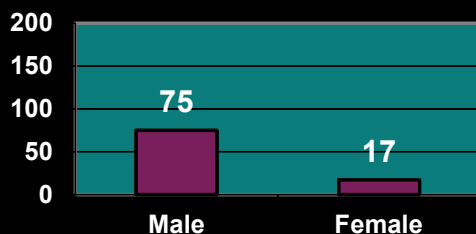
Functioning Level



Ambulation



Gender



Age Range



Statistics as of 12/31/13

Nancy Banks, Superintendent

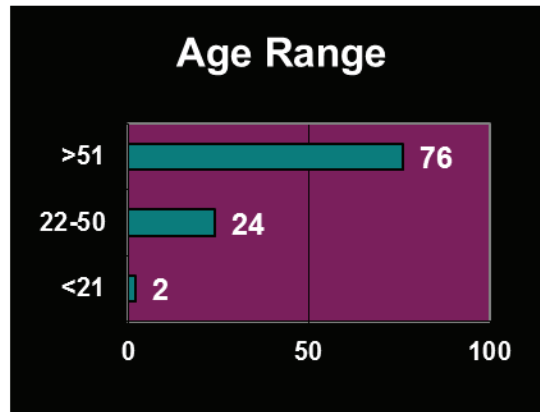
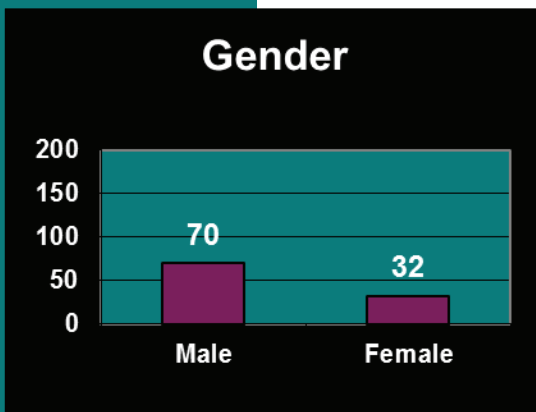
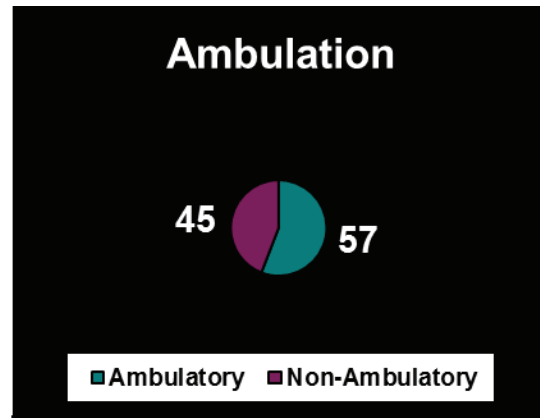
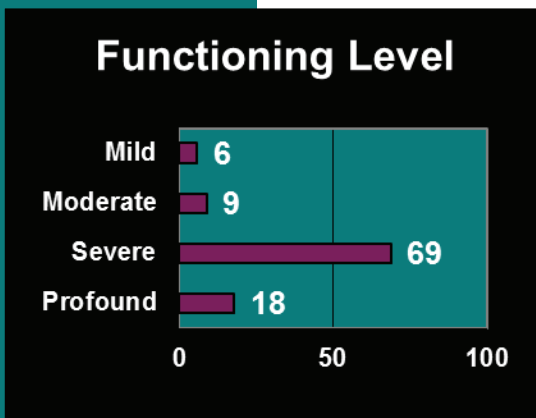
Mount Vernon Developmental Center



The Mount Vernon Developmental Center (MVDC) sits amidst 310 acres in central Knox County. The campus consists of five residential buildings, the Administration Building, the Maintenance/Kitchen Building, PH&E and Willow Works, and two vacant buildings used for storage. As you come in the main entrance, "Independence Square", Washington, Lincoln and Jefferson Cottage, is home to sixteen persons each. Further up the hill are Jones and Snyder Cottages, serving 32 persons each. MVDC's services are focused and adapted to the needs of its residents, most of whom have multiple physical and medical needs. Over half of the individuals are non-ambulatory, 74% are over the age of 51 and 86% function in the 'severe' to 'profound' range of disability. The center provides two day habilitation programs, a vocational program and a number of individuals participate in day/vocational programs offered by private providers in the community. The Physical Health and Education

Building offers a pool and gym for social, recreational and therapeutic activities.

Individuals participate in numerous off-campus social and recreational activities and are fortunate to have a campus that offers the exposure to nature and opportunities for activities including fishing and boat rides on the pond, walking the many paths and trails throughout the center, working in the gardens or just relaxing and watching the natural surroundings.



Statistics as of 12/31/13

Ernie Fischer, Superintendent

Northwest Ohio Developmental Center

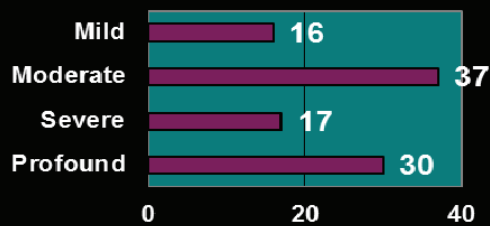
The Northwest Ohio Developmental Center (NODC) is located in the city of Toledo, within Lucas County, near the state of Ohio's northern border. NODC was dedicated in November of 1976 and the first individual was admitted in January 1977.

NODC currently serves approximately 100 individuals with developmental disabilities. These individuals live within seven attractive, comfortable, and modern living units. Nearly all individuals in residence spend their daytime hours participating in off-campus vocational/habilitative activities provided through the Lucas County Board of DD or private service providers.

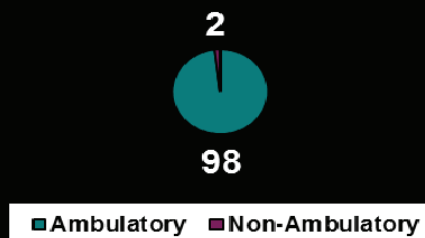
During the past year, NODC continued to provide a variety of services to those living at the center, while assisting the community in specific areas of support through the regional resource program. The center supported a number of individuals that chose to move into the community. NODC is committed to assisting individuals to develop the skills necessary for successful community life. The center continues to provide excellent, cost-effective care to the individuals using RIGHT way principles to guide our activity.



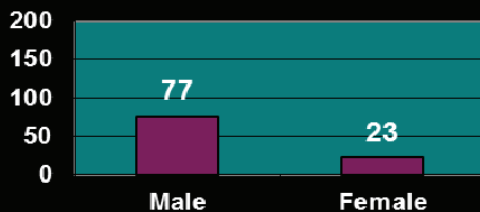
Functioning Level



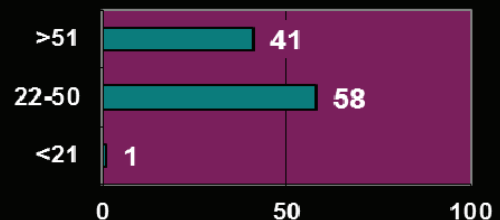
Ambulation



Gender



Age Range



Statistics as of 12/31/13

Richard Suehrstedt, Superintendent

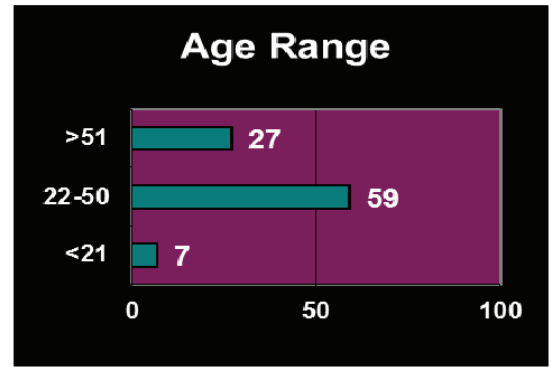
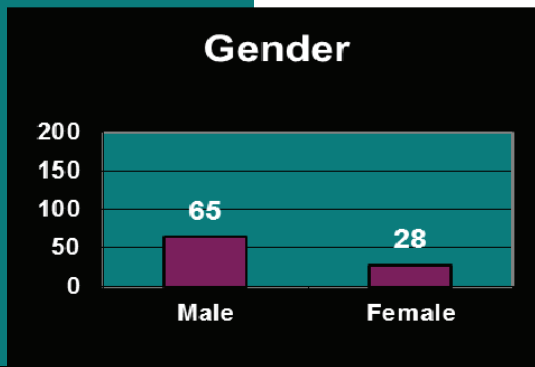
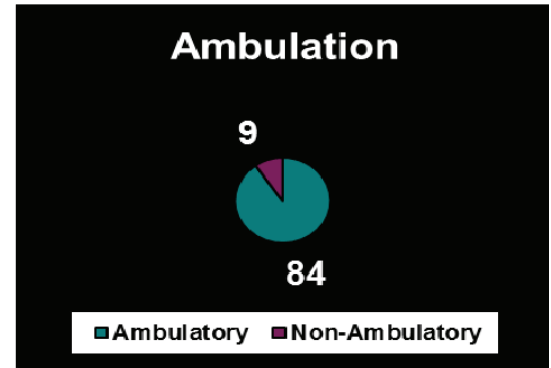
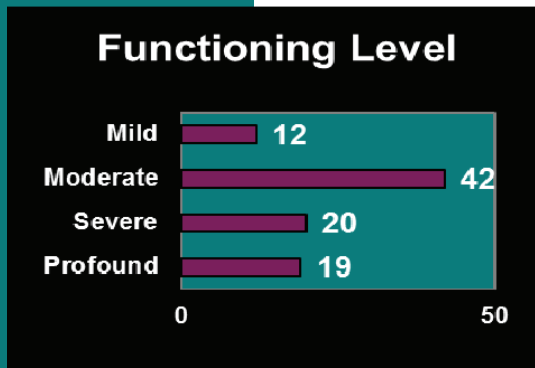
Southwest Ohio Developmental Center



Southwest Ohio Developmental Center (SODC) is located just 30 minutes east of downtown Cincinnati, bordering the village of Batavia and campus of University of Cincinnati Clermont, near many businesses and metropolitan activities while sitting on a beautiful 43 acre campus.

While enjoying the surrounding area is important, SODC residents also are treated to a campus that provides a gymnasium, game room, shelter house and activities department that schedules weekly events such as dances, church services, movie night with sleep overs, game nights and the popular girl's night out. Our seven cottages are maintained in a homelike environment and are consistently being updated for appearance and function. Most individuals attend work at the local Clermont County DD or Goodwill while others attend school or on campus activities.

A primary focus for SODC is community involvement for the center and the residents. In 2013, SODC collaborated and participated with the University of Cincinnati in sponsoring a benefit walk that took place through the UC campus onto the SODC campus, participated with local Chamber of Commerce designed to bring awareness to the facility, and worked with local Boy Scouts to complete Eagle Scout projects on campus. Also in 2013, SODC collaborated with Clermont and Hamilton County to develop two group homes in the community. SODC has remained very active in these homes that have provided an opportunity for eight individuals to move into the community.



Statistics as of 12/31/13

C. Scott McVey, Superintendent

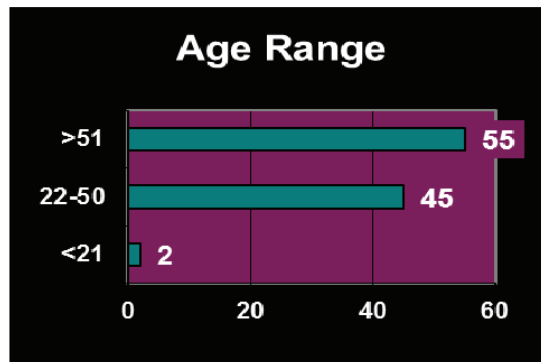
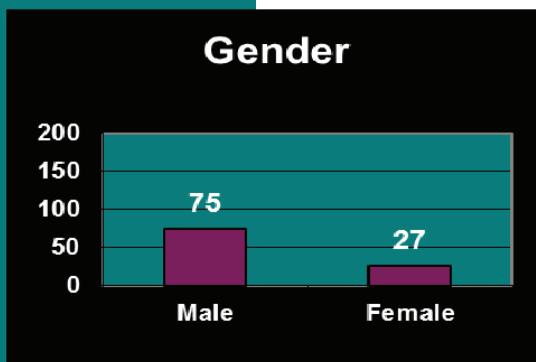
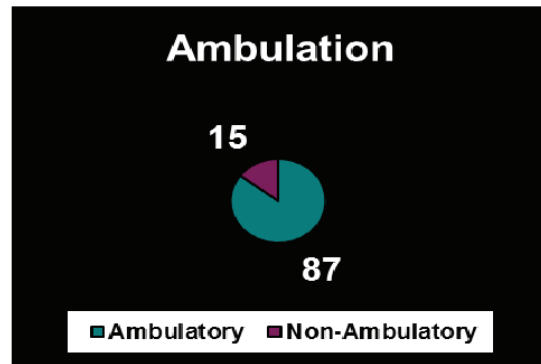
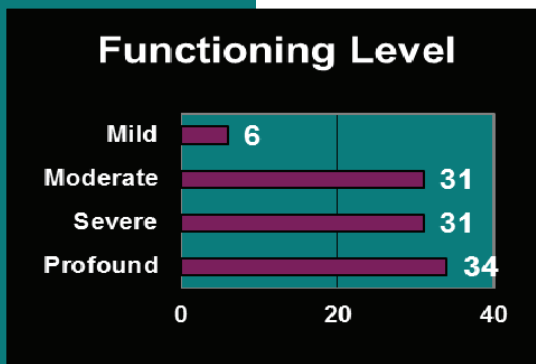
Tiffin Developmental Center

Located in Seneca County, Tiffin Developmental Center (TDC) is listed in the National Register of Historic Places under the resource name "National Orphans' Home, Junior Order United American Mechanics." The Junior Order owned the property prior to it being purchased in 1944 by the State of Ohio.

TDC sits on a total of 644 acres of which 351 acres are farmland and 235 acres are forest. TDC's main campus is located along the Sandusky River. This consists of 48 acres with 35 buildings, 11 of which are homes serving individuals with developmental disabilities. The census as of 12/31/13 was 102, five were short-term admissions.

In the past year, TDC served a 14-county catchment area that is primarily rural. They met all the requirements for participation in the Medicaid Program and received excellent surveys from both Licensure and Medicaid.

TDC provides regional resource support to community providers and county boards of DD. One of the most important aspects of the center's mission is to offer a safe home that supports the individual through positive approaches. The Center also assists those living at TDC to find community placement opportunities that will enhance their lives when they are able to move.



Statistics as of 12/31/13

Sara Lawson, Superintendent

Warrensville Developmental Center

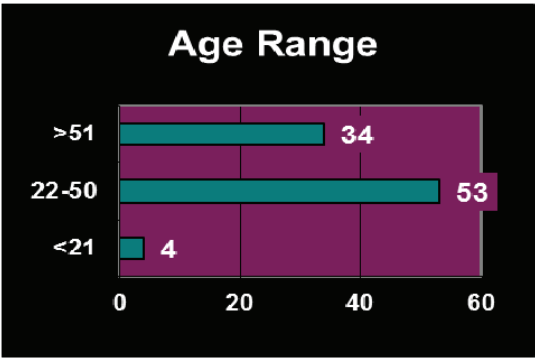
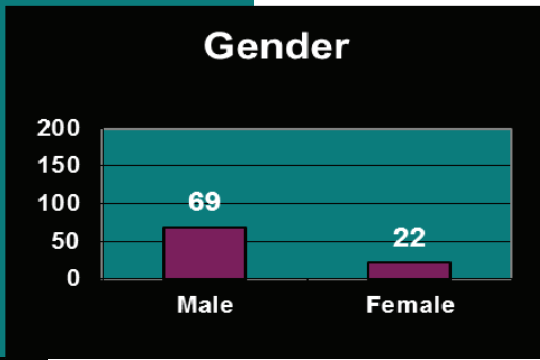
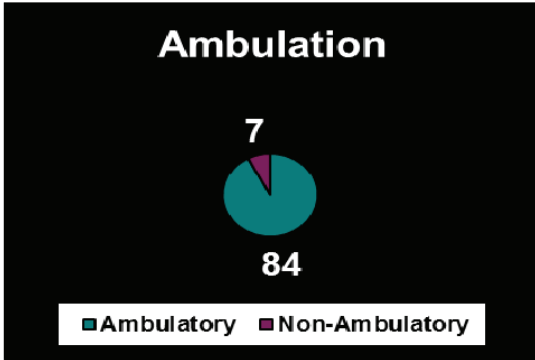
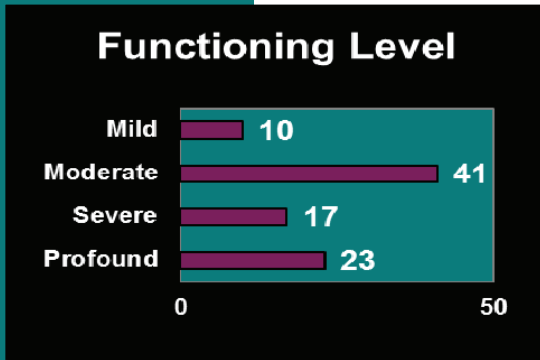


Warrensville Developmental Center (WDC) is located in Highland Hills, a suburb of Cleveland. Approximately 91 individuals with developmental disabilities call WDC home, residing in five houses. The campus is located on 42 acres and is conveniently located to several interstate highways, shopping, parks, as well as an abundance of cultural and historical museums, musical venues, entertainment and several professional sports teams.

WDC serves the counties (Region 6) of Lorain, Cuyahoga, Lake, Ashtabula, Geauga, Trumbull, Summit, Portage, Medina, Ashland, Wayne, Stark, Mahoning, and Columbiana.

WDC provides housing and training to its residents with a full array of health services including a physician, a psychiatrist, nursing, OT/PT and specialists in psychology and speech therapy. There are also extensive supports in the areas of activities of daily living and social skills.

WDC residents attend seven different county board activity centers, including county operated employment enclaves and mobile crews, as well as four community based day programs. One of WDC's residents attends a community provider employment center. For the individuals not receiving adult services from Cuyahoga County, WDC provides an onsite alternative day program. In this program, individuals create artwork and various craft projects, participate in gardening, living skills groups, organized physical education and attend educational events both on-site and in the community.



Statistics as of 12/31/13

Wendy DiGregorio, Superintendent

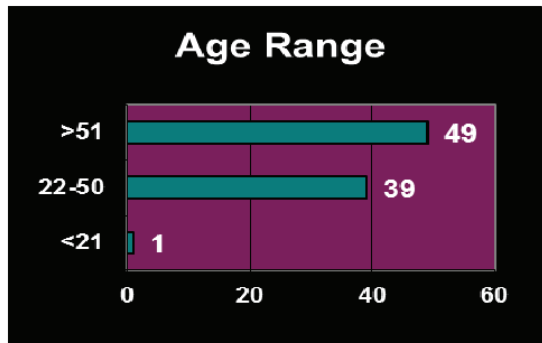
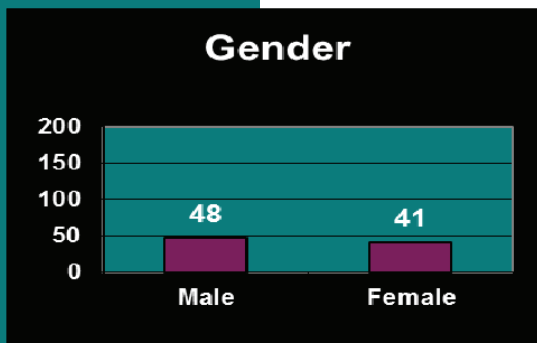
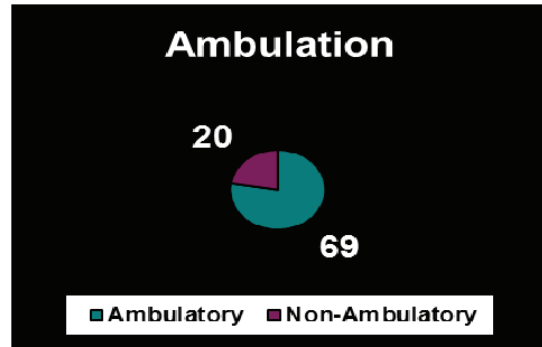
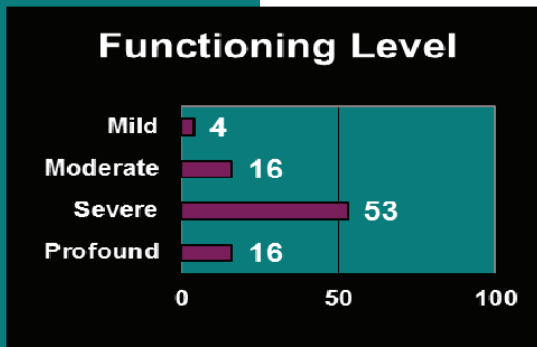
Youngstown Developmental Center

Located in Mahoning County, Youngstown Developmental Center (YDC) is home to approximately 90 individuals with developmental disabilities. YDC shares responsibility for the counties of Region 6 with Warrensville Developmental Center. With their families and friends residing in nearby communities, many residents maintain close contact with them and enjoy the benefit of their continued involvement in their lives.

Comprised of 10 buildings on 35 acres of land, the YDC's seven residential homes blend in nicely with the surrounding neighborhood and provide the individuals living at YDC with a physical environment that is as "close to home" as possible.

Most individuals living at the center function in the profound range of intellectual disability and many have medical and motor deficits as well. As with the general public, the population of our center continues to "grow older" and, as they do, experience more frequent and greater health care needs. Medical appointments, consultations, and hospitalizations continue to be provided by health care professionals in the community and the number and types of services have expanded through the years to meet the needs of our aging population.

An array of services are available to meet the needs of those residing at the center. Each individual has a treatment plan that is developed by an interdisciplinary team and carried out by direct service and professional staff. Plans are individualized and designed to increase a person's independence through skill building in areas such as eating, dressing, home maintenance, and communication.



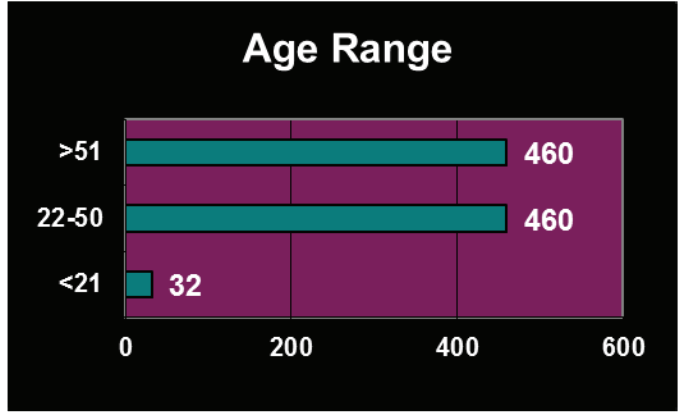
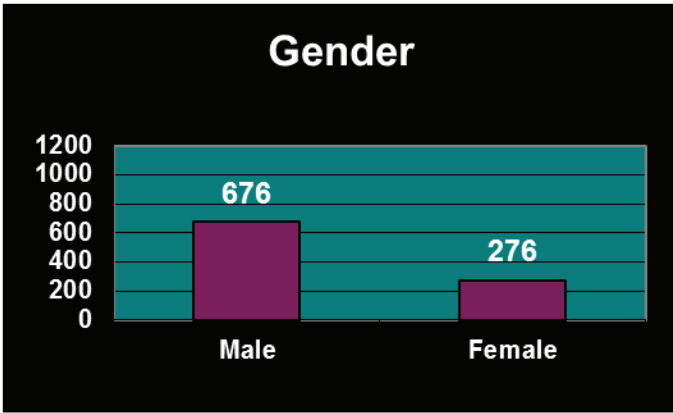
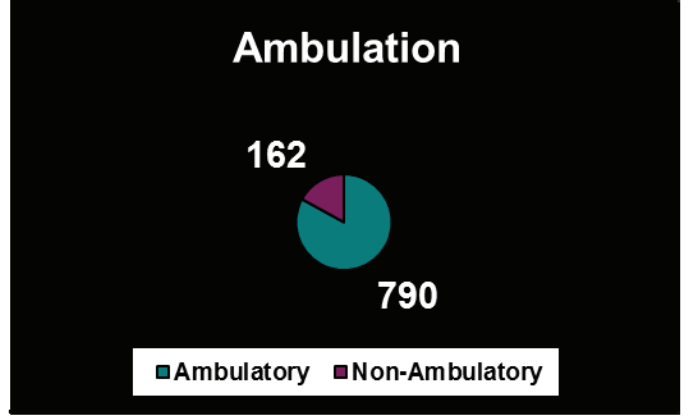
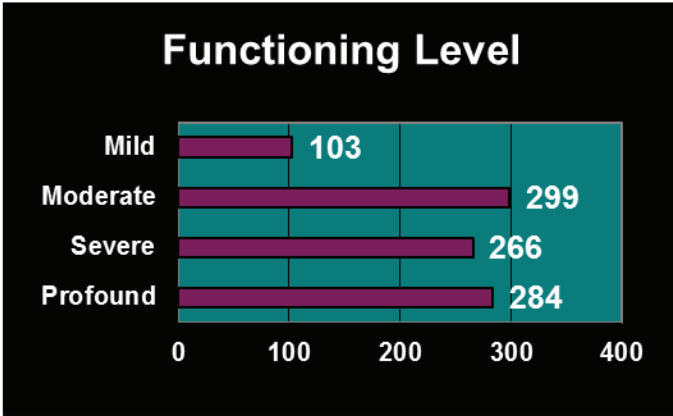
Statistics as of 12/31/13

Cynthia Renner, Superintendent



**Developmental Center
Statistical Summary Charts**

OHIO'S DEVELOPMENTAL CENTERS – 2013 OVERALL STATS



CENSUS 12/31/13 = 952

STAFF YEARS OF SERVICE

	0-10	11-20	21+	Total
Cambridge	104	57	31	192
Columbus	190	52	20	262
Gallipolis	145	116	74	335
Montgomery	88	59	35	182
Mount Vernon	112	70	65	247
Northwest	114	76	38	228
Southwest	134	34	39	207
Tiffin	53	83	94	230
Warrensville	170	57	48	275
Youngstown	136	50	40	226
Total	1246	654	484	2384

Source: Developmental Centers
[01/01/13-12/31/13]

DEVELOPMENTAL CENTER'S 2013 ADMISSION SUMMARY

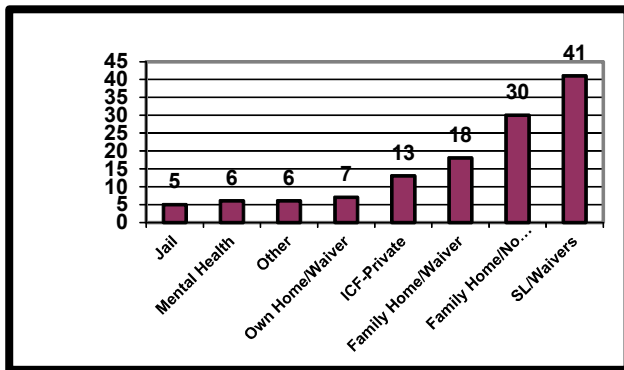
Center	Gender		Ambulation		Age At Time Of Admission					MR Level			
	Male	Female	Ambulatory	Non-Ambulatory	14 - 29	30 - 39	40 - 49	50 - 59	60 and Over	Mild	Moderate	Severe	Profound
Cambridge	13	2	14	1	8	2	0	4	1	6	8	0	1
Columbus	8	2	10	0	5	1	0	2	2	4	6	0	0
Gallipolis	5	1	5	1	4	0	0	0	2	2	3	0	1
Montgomery	12	1	12	1	7	1	2	2	1	5	3	3	2
Mount Vernon	2	2	4	0	2	2	0	0	0	0	3	1	0
Northwest	6	1	7	0	3	2	0	0	2	2	2	1	2
Southwest	19	8	27	0	16	8	2	1	0	6	20	1	0
Tiffin	7	5	12	0	7	2	0	1	2	5	1	5	1
Warrensville	13	6	19	0	11	3	4	1	0	9	10	0	0
Youngstown	8	5	13	0	10	3	0	0	0	8	4	0	1
Totals	93	33	123	3	73	24	8	11	10	47	60	11	8

Total Admissions = 126

Admission data does not included DC to DC transfers

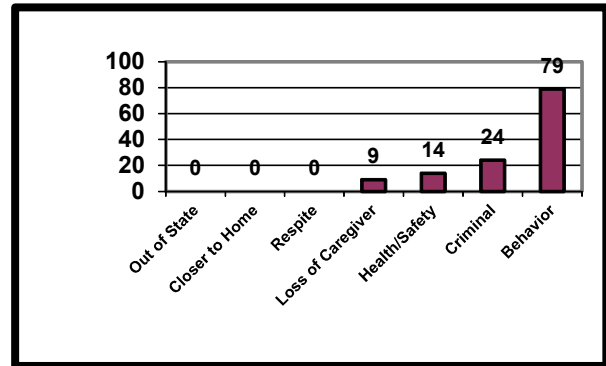
Voluntary	101
Involuntary	25
	126

PRIOR PLACEMENT



Jail	5
Mental Health	6
Other	6
Own Home/Waiver	7
ICF-Private	13
Family Home/Waiver	18
Family Home/No Waiver	30
SL/Waivers	41
	126

REASON FOR ADMISSION

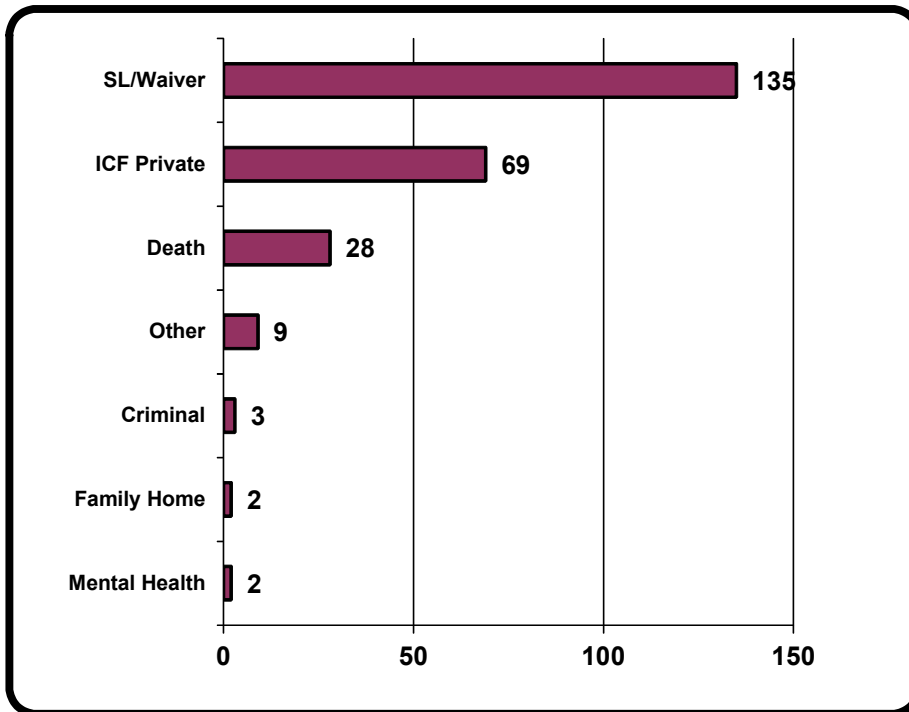


Out of State	0
Closer to Home	0
Respite	0
Loss of Caregiver	9
Health/Safety	14
Criminal Behavior	24
Behavior	79
	126

DEVELOPMENTAL CENTER'S 2013 DISCHARGE SUMMARY

Center	Gender		Ambulation		Age Range					MR Level				Status	
	Male	Female	Ambulatory	Non-Ambulatory	13 to 29	30 to 39	40 to 49	50 to 59	60 and over	Mild	Moderate	Severe	Profound	Deaths	Discharges
Cambridge	14	3	14	3	4	3	4	4	2	2	9	2	4	3	14
Columbus	13	7	18	2	5	5	0	5	5	4	8	3	5	3	17
Gallipolis	33	17	33	17	4	7	8	11	20	4	15	9	22	6	44
Montgomery	12	1	12	1	5	1	0	4	3	2	7	4	0	3	10
Mount Vernon	9	10	11	8	3	3	3	3	7	1	3	13	2	4	15
Northwest	13	11	23	1	2	5	5	4	8	4	6	6	8	1	23
Southwest	20	18	36	2	18	9	6	4	1	6	27	4	1	1	37
Tiffin	14	7	19	2	3	5	2	4	7	5	6	7	3	4	17
Warrensville	14	6	20	0	7	6	4	1	2	7	7	3	3	0	20
Youngstown	20	6	26	0	13	3	1	7	2	8	7	5	6	3	23
Totals	162	86	212	36	64	47	33	47	57	43	95	56	54	28	220
Discharge data does not include DC to DC transfers													Total Discharges = 248		

DISCHARGE PLACEMENT

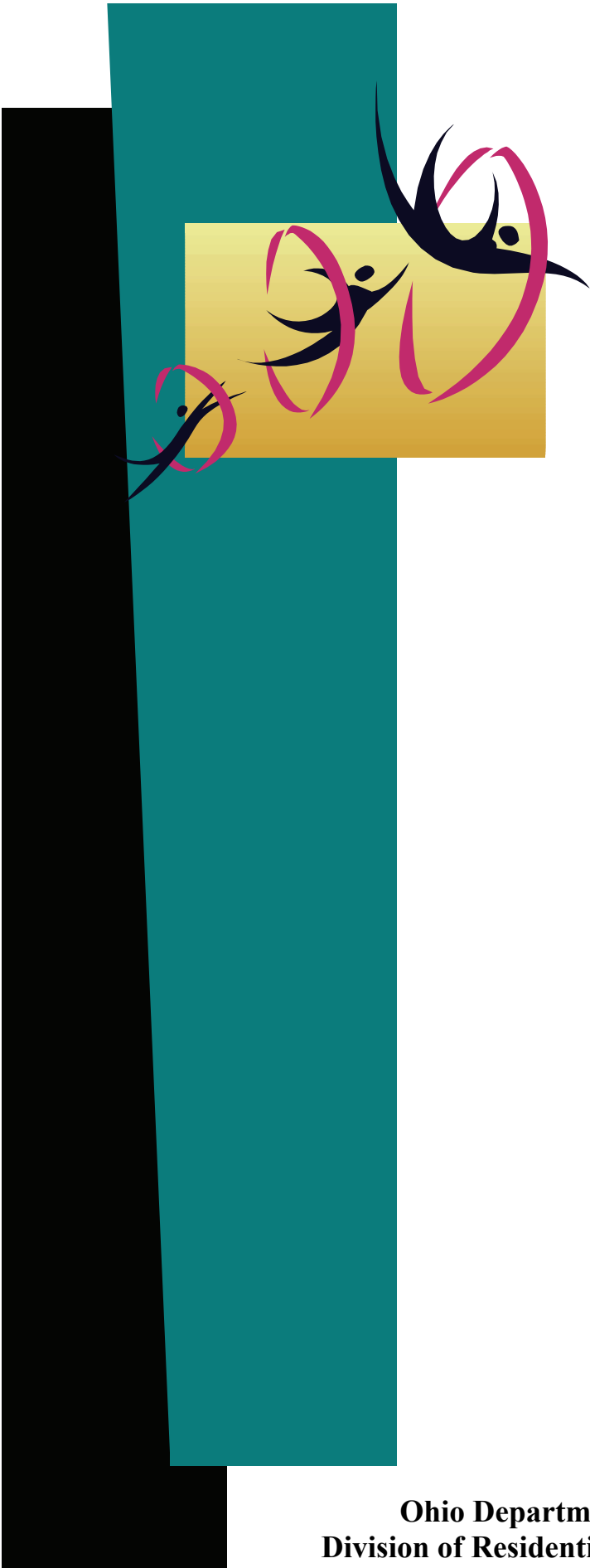


Mental Health	2
Family Home	2
Criminal	3
Other	9
Death	28
ICF Private	69
SL/Waiver	135
Total	248

**DEVELOPMENTAL CENTER ADMISSION/DISCHARGE
COUNTY COMPARISON 2013**

COUNTY	ADMISSION	DISCHARGE
	2013	2013
ADAMS	1	0
ALLEN	4	3
ASHLAND	1	1
ASHTABULA	2	1
ATHENS	1	0
AUGLAIZE	0	0
BELMONT	1	2
BROWN	1	3
BUTLER	2	3
CARROLL	0	1
CHAMPAIGN	2	1
CLARK	3	7
CLERMONT	5	9
CLINTON	1	1
COLUMBIANA	3	5
COSHOCTON	0	1
CRAWFORD	0	0
CUYAHOGA	14	17
DARKE	0	0
DEFIANCE	0	0
DELAWARE	3	1
ERIE	0	0
FAIRFIELD	0	1
FAYETTE	1	3
FRANKLIN	3	11
FULTON	0	1
GALLIA	2	7
GEAUGA	0	0
GREENE	0	0
GUERNSEY	2	1
HAMILTON	11	22
HANCOCK	2	3
HARDIN	0	0
HARRISON	0	0
HENRY	0	0
HIGHLAND	1	0
HOCKING	0	0
HOLMES	0	0
HURON	1	0
JACKSON	1	3
JEFFERSON	0	0
KNOX	1	5
LAKE	1	1
LAWRENCE	3	2
LICKING	1	3

COUNTY	ADMISSION	DISCHARGE
	2013	2013
LOGAN	0	0
LORAIN	0	1
LUCAS	3	24
MADISON	1	0
MAHONING	2	4
MARION	2	1
MEDINA	1	4
MEIGS	0	0
MERCER	0	0
MIAMI	0	0
MONROE	1	1
MONTGOMERY	8	9
MORGAN	0	1
MORROW	0	1
MUSKINGUM	2	0
NOBLE	0	0
OTTAWA	0	1
PAULDING	0	0
PERRY	0	0
PICKAWAY	0	0
PIKE	1	4
PORTAGE	2	1
PREBLE	0	8
PUTNAM	0	0
RICHLAND	0	0
ROSS	1	4
SANDUSKY	2	3
SCIOTO	4	7
SENECA	0	0
SHELBY	1	0
STARK	2	10
SUMMIT	6	5
TRUMBULL	2	4
TUSCARAWAS	3	3
UNION	1	0
VAN WERT	1	0
VINTON	0	0
WARREN	1	2
WASHINGTON	1	1
WAYNE	0	0
WILLIAMS	1	0
WOOD	1	0
WYANDOT	0	2
DEATH	0	28
OUT OF STATE	2	0
TOTAL	126	248



**Ohio Department of Developmental Disabilities
Division of Residential Resources—Annual Report CY2013**